



# Bear Facts

The Weekly Newsletter of  
Bethany Lutheran School  
Long Beach, CA  
[www.bethanylutheran.org](http://www.bethanylutheran.org)

Communication+Responsibility+Organization+Service+Sharing



## FROM THE PRINCIPAL



Tomorrow we will join the other Lutheran schools in our district to perform an act of service to our communities. Each school chooses different projects, some are on-campus, and some are off-campus. It's amazing to see the impact our schools make!

This year Bethany's students will be working with Phil's Friends to create greeting cards for patients undergoing cancer treatment. We will also be sending them our October chapel offerings.

Phil's Friends is an organization committed to providing Christ-centered support and hope to those affected by cancer. They gather hand-made cards like ours from all over the U.S. and include them in custom care packages sent to cancer patients.

Phil Zielke began this ministry after his own experience battling cancer. He was inspired by the thoughtfulness and selfless love of others when he received a care package, weekly encouraging cards and an outpouring of prayerful support throughout his journey.

I'm so glad our students have the opportunity to reach out to folks they've never met to offer words of encouragement and hope, as well as the chance to live out Jesus' command to love our neighbors as ourselves.

*God bless your  
Thanksgiving celebrations.  
I'm thankful for each of you!  
Dr. Fink*

Grandfriends Day  
Friday, November 17  
8:45-12:00

*(Late start day...  
all doors open at 8:30)*

This is a wonderful opportunity for your child to share a morning of school with grandparents or other friends of the family.

Will your child be going home with his/her grandfriend? Please inform your child's teacher by e-mail.

Finally, can you lend a hand serving treats for the grandparents? Contact your room mom and let her know!



School Bulletin #13  
November 14, 2017

## DON'T FORGET

- ☺ Nov. 14-15 Christmas Store
- ☺ 11/16-Cook's Night Out at Chipotle
- ☺ Nov. 17-Grandfriends Day-Minimum Day
- ☺ Nov. 20-24 Thanksgiving Break
- ☺ Dec. 5-Vision testing
- ☺ Dec. 8-2<sup>nd</sup> Quarter Progress Reports
- ☺ Dec. 10-Bethany's Christmas Concerts at 1:30, 4:00 and 7:00
- ☺ Dec. 20-Christmas service-Grades 3-5, 9:00 and 7:00
- ☺ Dec. 22-Minimum Day
- ☺ Dec. 25-Jan. 5-Christmas break
- ☺ Jan. 8-School resumes

Our next  
Cook's Night Out is  
Thursday night at Chipotle!  
Bring the attached flyer and  
don't forget to use Scrip!  
Thanks for supporting our  
8<sup>th</sup> Graders!



## A Thanksgiving Prayer

Thank you, Lord, for the world so sweet.  
Thank you for the food we eat.  
Thank you, Lord, for birds that sing.  
Thank you, Lord, for everything.  
Amen.



The FISHin' Hole  
Opportunities to Serve

We need some merry Christmas elves at the Christmas store this week! Here's the link to sign up:

<http://signup.com/go/MVxsgdw>



See's Candy makes a GREAT gift for neighbors, employees, etc. We can help you avoid the lines at See's this Christmas season, and you can help the PTL raise additional funds by ordering your See's here at Bethany! Orders are due Nov. 27. Candy will be delivered on Dec. 11. Easy-breezy!

### Our November chapel project is Operation Christmas Child:

*"Therefore, go and make disciples of all the nations....: Matt 28:19*

Our November chapel project is Operation Christmas Child. Shoeboxes came home last week. If you'd like to participate, pack the shoebox with small toys, hygiene items and school supplies for a child between 2 and 14 and share the love of Jesus. Please include a personal note or a photo which often becomes a child's favorite item in the shoebox. **NEW THIS YEAR: NO TOOTHPASTE OR CANDY** (toothbrushes are o.k.) The brochure, "How to Pack Your Shoebox Gift" has all the information you need to get started.

Boxes are due by FRIDAY, NOVEMBER 17, 2017.



### FREE MONEY

...all you have to do is ask!  
**Ask your employer to purchase Scrip/gift cards for holiday gifts!**

Last week we received an order for 230 \$25 Stater Bros. gift cards. **Instead of giving turkeys to their employees at Thanksgiving, this company decided to give grocery gift cards.** At Christmas, instead of giving each employee a ham, they will also receive grocery gift cards. The profit Bethany earned for this order was \$345, which is a \$207 tuition rebate (60% of the profit) and \$138 (40% of the profit) for Bethany ministries. Rebates add up quickly, the more Scrip you purchase, the larger your rebate!

Tell your employer about the variety of gift cards available from Bethany Scrip. We have many popular items such as \$5 Starbucks cards, \$10 movie tickets, and a large variety of popular restaurants or retail stores. We gladly accept a company check when you place an order from your employer.

Visa gift cards are also popular for gifts. We have \$50 and \$100 cards on hand. Tell your employer, or use them yourself at Costco, Trader Joes, Ralphs or anywhere we don't have Scrip/gift cards available.

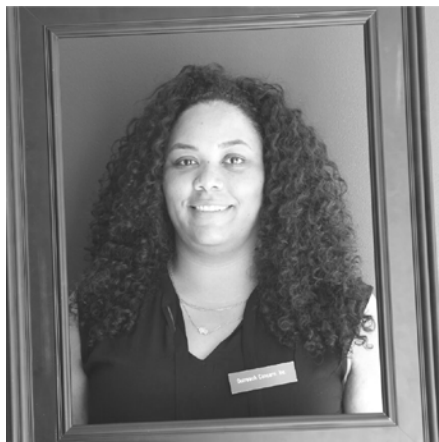
**Plan Ahead**-buy extra grocery scrip for Thanksgiving, movie tickets for next week, or fast food cards for eating on the go.

**Low Denomination Gift Cards** are available for stocking stuffers and small gifts for coaches, neighbors or other special people. Some of the cards available for a limited time are \$5 Barnes & Noble, \$5 Panera Bread, \$10 Target, or ask to see the complete list.

Did you know that Bethany Lutheran School has a school counselor intern on campus two days per week? We partner with Outreach Concern counseling services to provide an extra layer of care for students who need it. This partnership is funded by the Sharon Maxwell estate. Sharon was a teacher at Bethany many years ago who had a heart for hurting students.

We have a new intern each year from Outreach Concern. This year it is Brianna Young. Brianna is from the Cerritos area and is currently a student in Pepperdine University's Clinical Psychology program with an emphasis on Marriage and Family therapy. Her passion is work with a variety of populations using mindfulness techniques for personal growth and reflections, with a specific interest in working with children and teens who have ADHD, as well as law enforcement and the homeless. Brianna also loves dogs and travel.

We're glad to have you with us, Brianna!



# SCHOOL SPIRIT TASTES GREAT



Make dinner a selfless act by joining us for a fundraiser to support Bethany Lutheran School . Come in to the Chipotle at **5310 Lakewood Blvd.** in Lakewood on **Thursday, November 16th** between **5:00pm** and **8:00pm**. Bring in this flyer, show it on your smartphone or tell the cashier you're supporting the cause to make sure that 50% of the proceeds will be donated to Bethany Lutheran School .



Online orders will not be included in the fundraiser total. To ensure your purchase is counted in the fundraiser, be sure to order and pay in-restaurant. Gift card purchases during fundraisers do not count towards total donated sales, but purchases made with an existing gift card will count.

# SCHOOL SPIRIT TASTES GREAT



Make dinner a selfless act by joining us for a fundraiser to support Bethany Lutheran School . Come in to the Chipotle at **5310 Lakewood Blvd.** in Lakewood on **Thursday, November 16th** between **5:00pm** and **8:00pm**. Bring in this flyer, show it on your smartphone or tell the cashier you're supporting the cause to make sure that 50% of the proceeds will be donated to Bethany Lutheran School .



Online orders will not be included in the fundraiser total. To ensure your purchase is counted in the fundraiser, be sure to order and pay in-restaurant. Gift card purchases during fundraisers do not count towards total donated sales, but purchases made with an existing gift card will count.